

OSC TELCIU RA
U.P. II Fiod
nr. 20C

Suprafata = 20ha
01.08.2022
Accidentele I

ing. Ruzica



OSC TELCIU RA
U.P. 2 Ried
U-a. 200

Suprafata = 20 ha
01.08.2014
Accidentale 5

ing. Popescu



OSC TELCIU RA
U.P. II Fiad
u-a 20D

Suprafata 20 ha
01.08.2014
Accidental

P. Vasile



OSC TELCIU RA
U.P.F. Fiad
Uca 116A

Suprafata 50 ha
31.07.2014
Accidentat

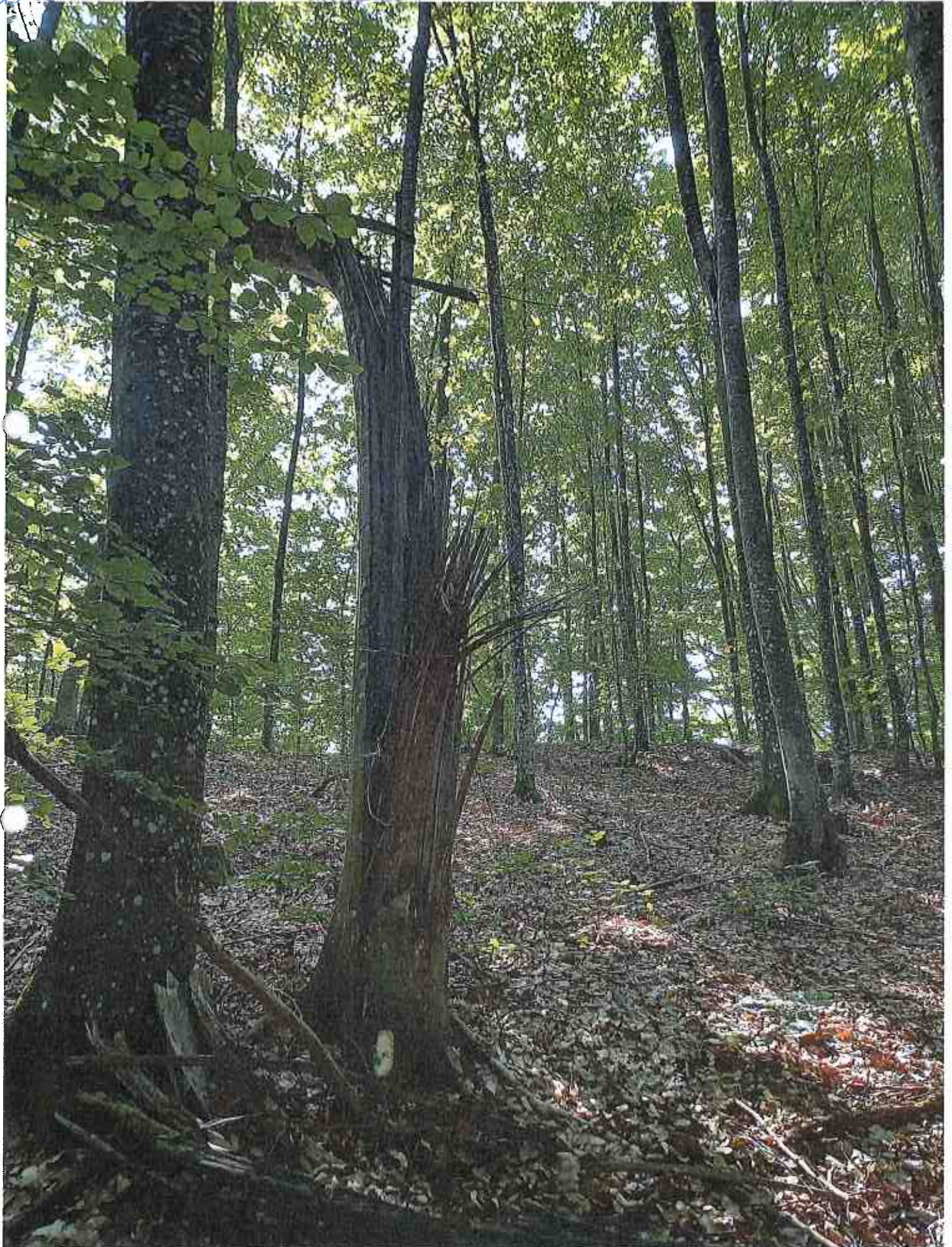
Papasa Vasile



OSC TELCIU RA
U.P. II Fiad
Uca 116A

Suprafata 50 ha
31.07.2024
Anul de inventariu

Pupescu Vasile



OSC TELCIU RA
U.P. II Fiad
ura 116A

Suprafata 5.0 ha
31. 07. 2024
Acordata

Papete Vasile

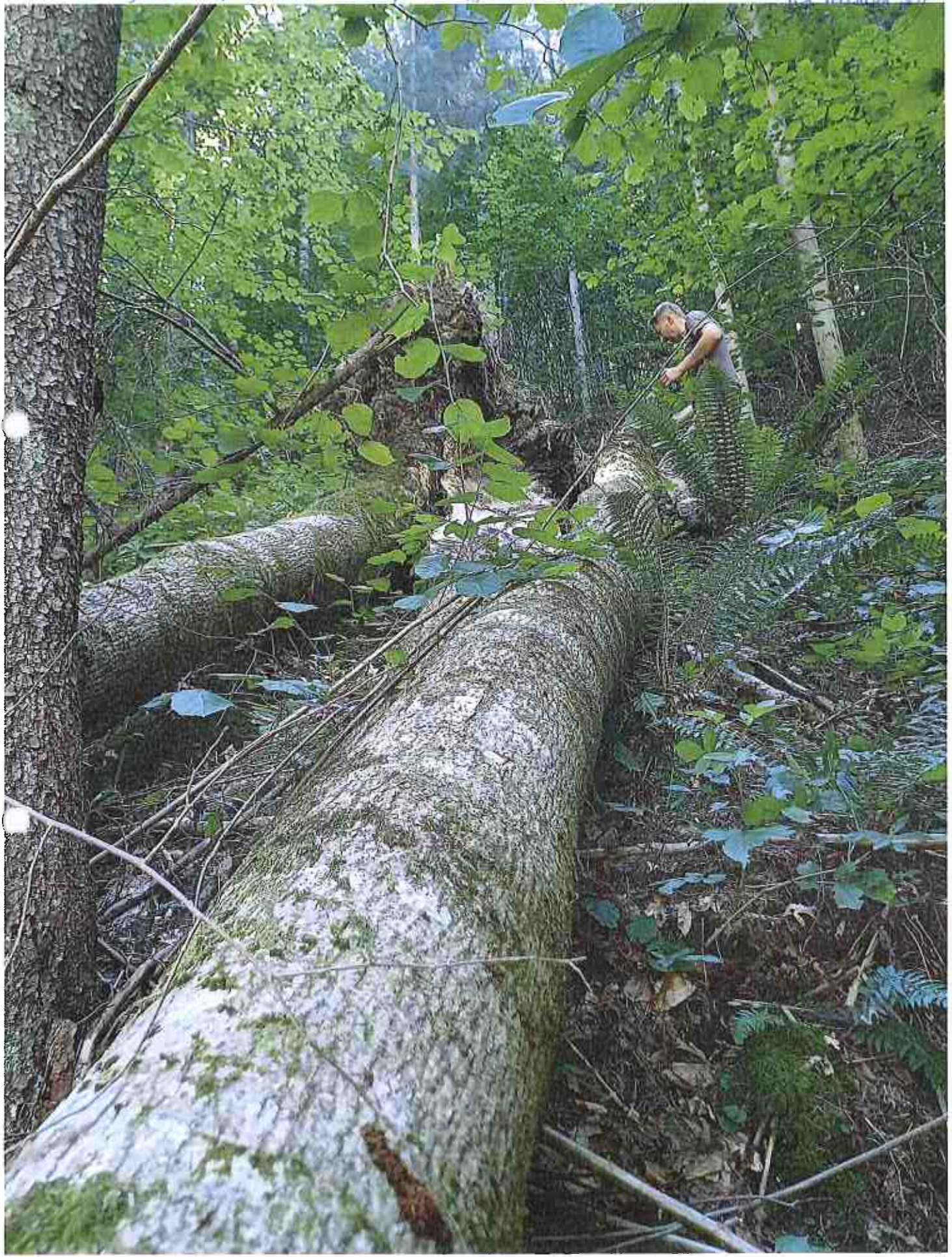


OSCELECIU RA

30.07.2017
Suprafata 40 ha

ing. Popa

U.P. nr. Fiad, ua 120, Accidentele I



OSC TELCIU RA
U.P. II Fiad
u-a 16B

Suprafata 30 ha
30.07.2024
Accidental

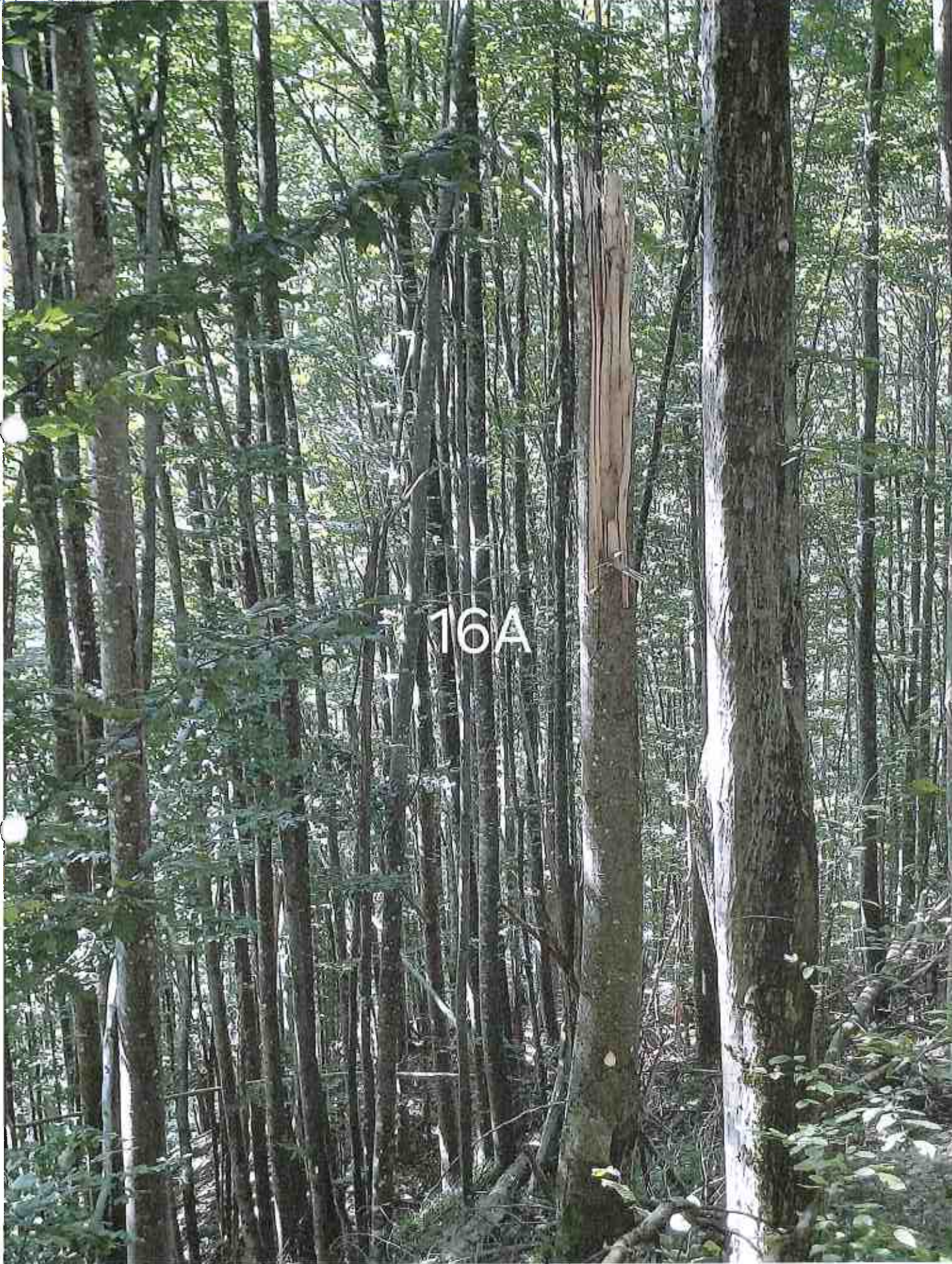
Pupăza Vasile



OSC TELCIU RA
U.P. II Fiad
u-a 16A

Suprafata 50 ha
30.07.2014
Accidentala?

Papasa Vasile



OSC TELCIU RA
U.P. II Fiad
u-a 16A

Suprafata 5,0 ha
30. 07. 2014.
Arac

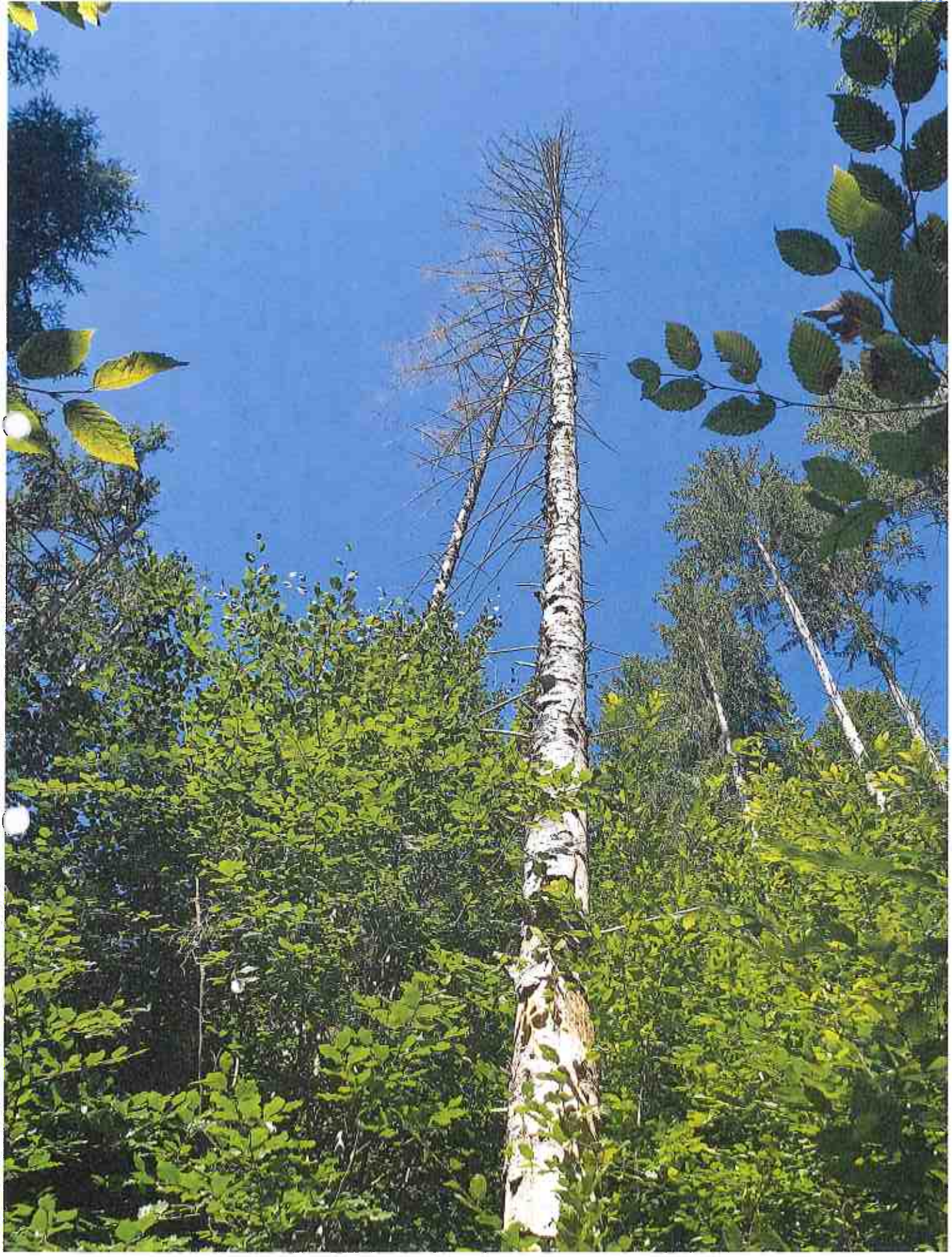
Pupăza Vasile



OSC TELCIU RA
U.P. Fiad
na 17B

30.07.2014
Suprafata = 4ha
Accidentat

Ing. Popescu Valeriu



OSC TELCIU RA
U.P. II Fiad
u.a. 37A

Suprafata 20 ha
25.07.2024

Pupăza Vasile



OSC TELCIU RA
U.P. II Fiad
u-a 32A

Suprafata 20 ha
25.07.2014

Papada Vasile



OSC TELCIU RA
U.P. II Fiad
v. a. 28A

Suprafata 3,2 ha
02.08.2024

Pupăza Vasile Pop



OSC TELCIU RA
U.P. II Fiad
u-a 20A

Suprafata 30 ha
22.08.2024

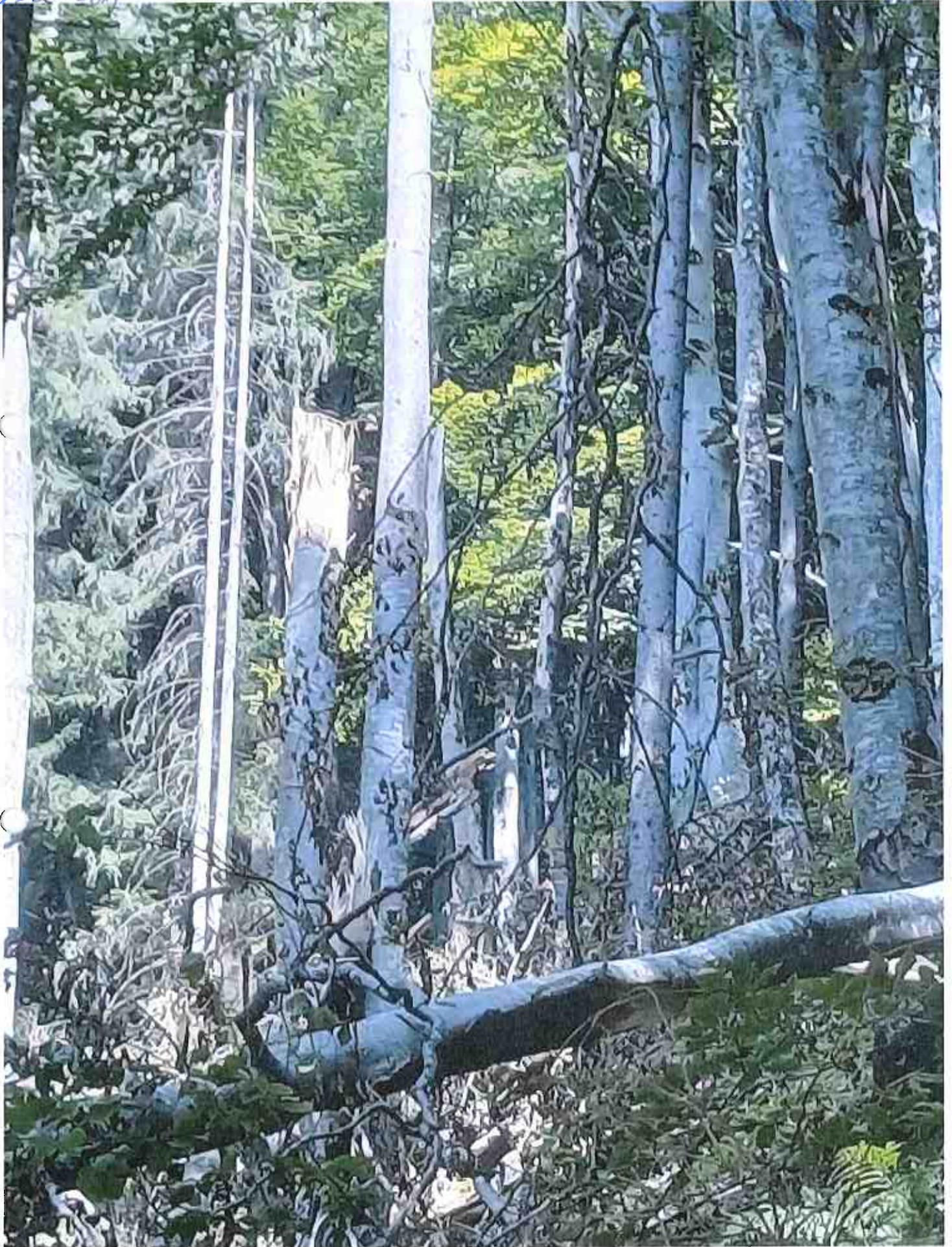
Pupăza Vasile



OSC TELCIU RA
U.P. II Fiad
u.a. 28A

Suprafata 3,0 ha
02.08.2024

Pupăza Vasile



OSC TELCIU RA
U.P. II Fiad
Uca 34A

Suprafata 3,0 ha
25.07.2024

Petru Vasile



OSC TELCIU RA
U.P. II Fiad
u. 34A

Suprafata 3,0 ha
25.07.2024

Pupăza Vasile

